



# MORECAMBE



FLOTATION ENERGY

## Morecambe Offshore Windfarm: Generation Assets Environmental Statement

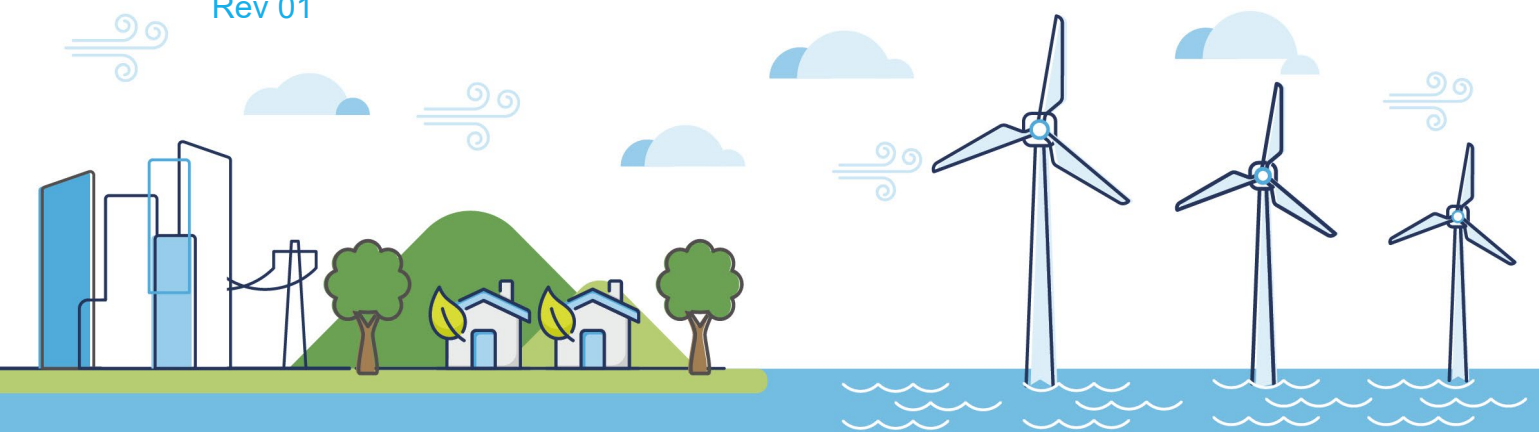
### Volume 5

### Chapter 18 SLVIA Figures (Part 23 of 34)

PINS Document Reference: 5.3.18.23

APFP Regulation: 5(2)(a)

Rev 01



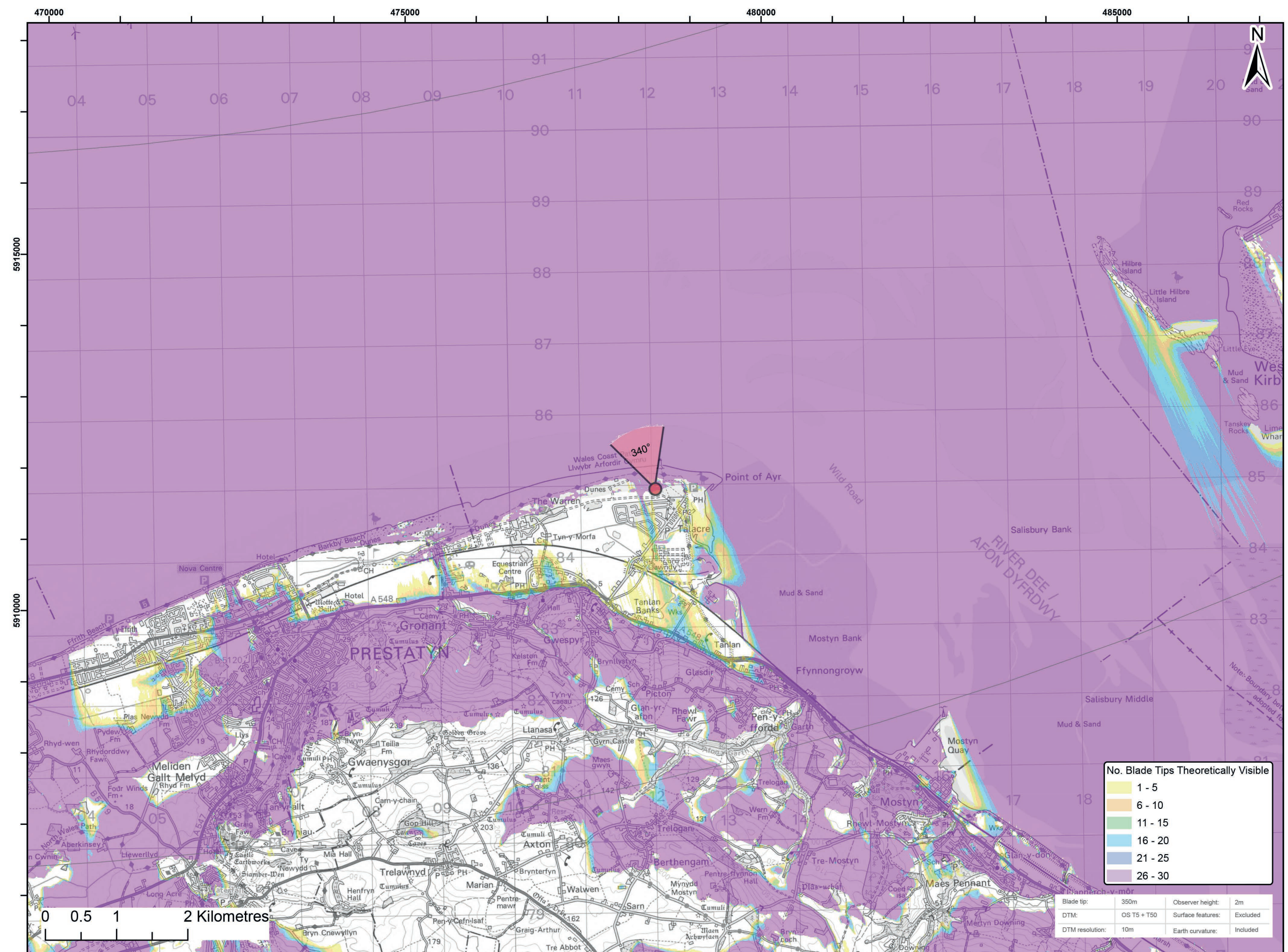
## Document History

<b>Doc No</b>	MOR001-FLO-CON-ENV-FIG-1180	<b>Rev</b>	01
<b>Alt Doc No</b>	PC1165-RHD-ES-XX-DG-Z-0018		
<b>Document Status</b>	Approved for Use	<b>Doc Date</b>	May 2024
<b>PINS Doc Ref</b>	5.3.18.23	<b>APFP Ref</b>	5(2)(a)

<b>Rev</b>	<b>Date</b>	<b>Doc Status</b>	<b>Originator</b>	<b>Reviewer</b>	<b>Approver</b>	<b>Modifications</b>
01	May 2024	Approved for Use	Royal HaskoningDHV	Morecambe Offshore Windfarm Ltd	Morecambe Offshore Windfarm Ltd	n/a



Viewpoint Location Plan Baseline Panorama (90 Degree View)  
Scale: 1:200,000



Viewpoint Location Plan (53.5 Degree View)  
Scale: 1:50,000

Legend:

- Morecambe Offshore Wind Farm - Assumed WTG locations (30 x BT 310m(HAT))
- 90 Degree Field of View
- 53.5 Degree Field of View
- 10km Radii
- 60km Study Area
- Morecambe Offshore Windfarm Site

Cumulative Wind Farms Status

- Operational
- Under Construction
- Consented
- Application
- Scoping
- Pre-Application

© Crown copyright and database rights (2023) Ordnance Survey 0100031673.

Report:  
Morecambe Offshore Windfarm: Generation Assets Environmental Statement

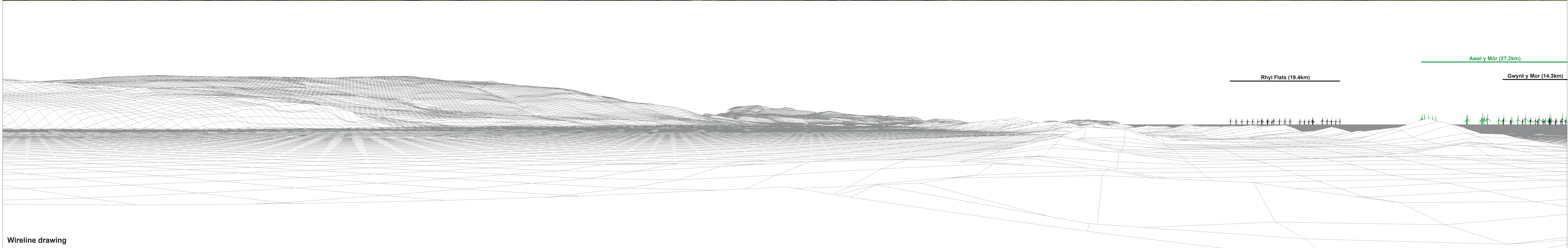
Title:  
Viewpoint 17:  
Talacre Beach (Point of Ayr)

Figure: 18.40a | Drawing No: 211609

Revision:	Date:	Drawn:	Checked:	Size:	Scale:
P02	25/09/2023	RA	SM	A3	1:50,000

Co-ordinate system: WGS 1984 UTM Zone 30N

MORECAMBE | Royal HaskoningDHV  
Enhancing Society Together



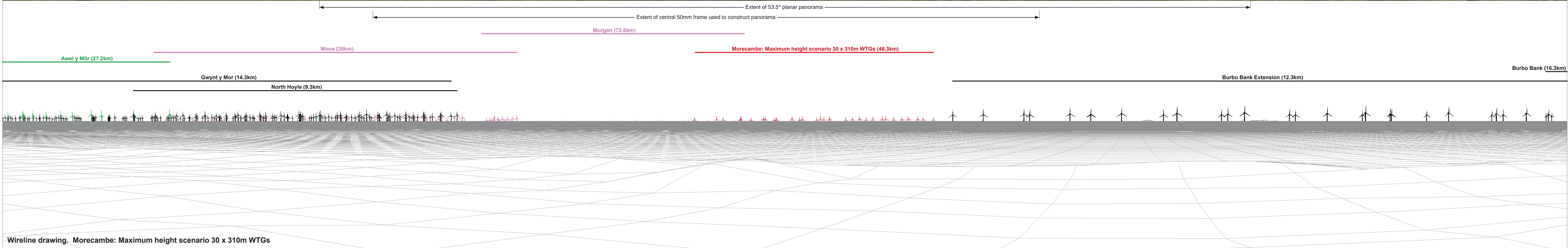
<b>OS reference:</b>	312051 E 384944 N	<b>Horizontal field of view:</b>	90° (cylindrical projection)	<b>Camera:</b>	Canon EOS 5D Mark II
<b>Eye level:</b>	16.2 m AOD	<b>Principal distance</b>	522 mm	<b>Lens:</b>	EF50mm f/1.4 USM
<b>Direction of view:</b>	250°			<b>Camera height:</b>	1.5 m AGL
<b>Nearest turbine:</b>	46.269 km			<b>Date and time:</b>	09/08/2022, 10:38

**Figure: 18:40b**  
**Viewpoint 17: Talacre Beach (Point of Ayr)**



Baseline photograph

This image provides landscape and visual context only



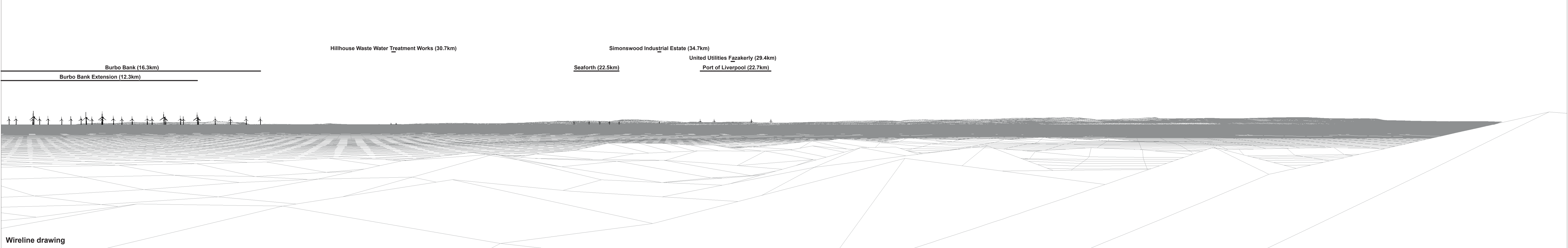
OS reference:	312051 E 384944 N	Horizontal field of view:	90° (cylindrical projection)	Camera:	Canon EOS 5D Mark II
Eye level:	16.2 m AOD	Principal distance:	522 mm	Lens:	EF50mm f/1.4 USM
Direction of view:	340°			Camera height:	1.5 m AGL
Nearest turbine:	46.269 km			Date and time:	09/08/2022, 10:38

Figure: 18:40c  
Viewpoint 17: Talacre Beach (Point of Ayr)



Baseline photograph

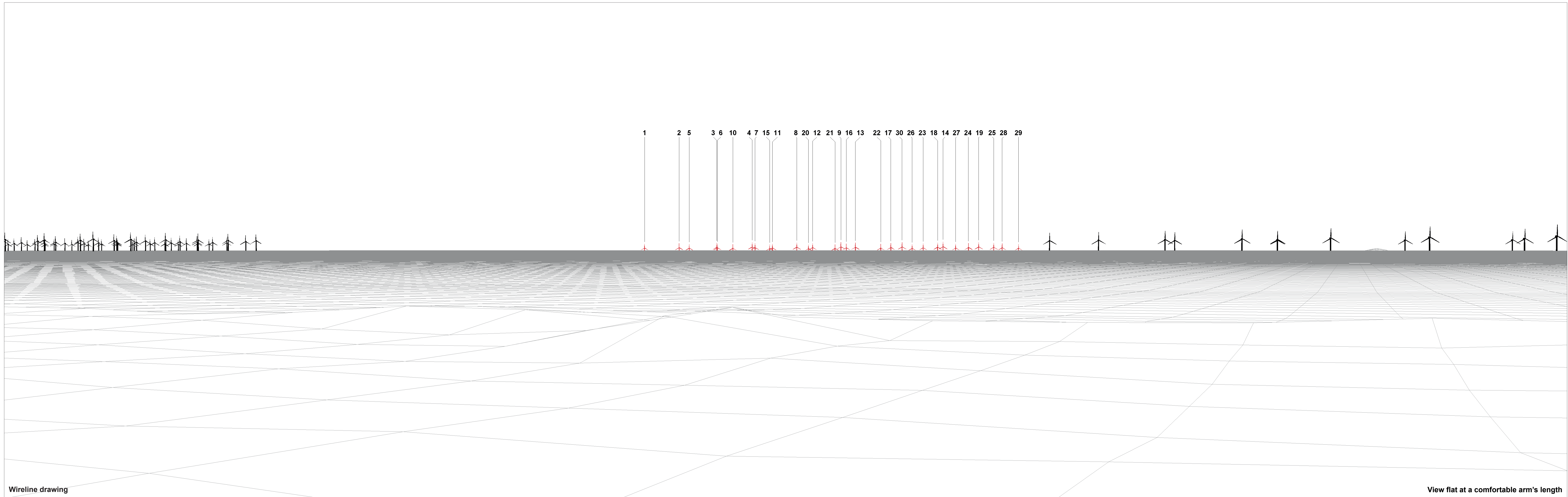
This image provides landscape and visual context only



Wireline drawing

<b>OS reference:</b>	312051 E 384944 N	<b>Horizontal field of view:</b>	90° (cylindrical projection)	<b>Camera:</b>	Canon EOS 5D Mark II
<b>Eye level:</b>	16.2 m AOD	<b>Principal distance</b>	522 mm	<b>Lens:</b>	EF50mm f/1.4 USM
<b>Direction of view:</b>	70°			<b>Camera height:</b>	1.5 m AGL
<b>Nearest turbine:</b>	46.269 km			<b>Date and time:</b>	09/08/2022, 10:38

**Figure: 18:40d**  
**Viewpoint 17: Talacre Beach (Point of Ayr)**



Wireline drawing

View flat at a comfortable arm's length

OS reference: 312051 E 384944 N  
 Eye level: 16.2 m AOD  
 Direction of view: 340°  
 Nearest turbine: 46.269 km

Horizontal field of view: 53.5° (planar projection)  
 Principal distance: 812.5 mm  
 Paper size: 841 x 297 mm (half A1)  
 Correct printed image size: 820 x 260 mm

Camera: Canon EOS 5D Mark II  
 Lens: EF50mm f/1.4 USM  
 Camera height: 1.5 m AGL  
 Date and time: 09/08/2022, 10:38

Figure: 18:40e  
 Viewpoint 17: Talacre Beach (Point of Ayr)



Baseline Photograph (offshore operational turbines have been rendered in this view)

View flat at a comfortable arm's length

<b>OS reference:</b>	312051 E 384944 N	<b>Horizontal field of view:</b>	53.5° (planar projection)	<b>Camera:</b>	Canon EOS 5D Mark II
<b>Eye level:</b>	16.2 m AOD	<b>Principal distance</b>	812.5 mm	<b>Lens:</b>	EF50mm f/1.4 USM
<b>Direction of view:</b>	340°	<b>Paper size:</b>	841 x 297 mm (half A1)	<b>Camera height:</b>	1.5 m AGL
<b>Nearest turbine:</b>	46.269 km	<b>Correct printed image size:</b>	820 x 260 mm	<b>Date and time:</b>	09/08/2022, 10:38

**Figure: 18:40f**  
**Viewpoint 17: Talacre Beach (Point of Ayr)**





Photomontage

View flat at a comfortable arm's length

<b>OS reference:</b>	312051 E 384944 N	<b>Horizontal field of view:</b>	53.5° (planar projection)	<b>Camera:</b>	Canon EOS 5D Mark II
<b>Eye level:</b>	16.2 m AOD	<b>Principal distance</b>	812.5 mm	<b>Lens:</b>	EF50mm f/1.4 USM
<b>Direction of view:</b>	340°	<b>Paper size:</b>	841 x 297 mm (half A1)	<b>Camera height:</b>	1.5 m AGL
<b>Nearest turbine:</b>	46.269 km	<b>Correct printed image size:</b>	820 x 260 mm	<b>Date and time:</b>	09/08/2022, 10:38

**Figure: 18:40g**  
**Viewpoint 17: Talacre Beach (Point of Ayr)**